

INDUSTRIAL CYLINDERS, DOUBLE ACTING

FEATURES

All **COD** cylinders have a thread on the body, in the rod and in the base which makes them very versatile.

A complete range of accessories are available for use with various applications.

The guide and end of stroke nut has a wiper to prevent the ingress of dirt and to improve the working life of the cylinder.

OPERATIONAL AREAS

These cylinders are used in industrial applications where a large number of cycles are required.

Used in blocking operations, in laboratories for tests needing push and pull forces.

The nitride anti-corrosive treatment makes them suitable for use in harsh environments and in the open air.

p. 35

ACCESSORIES



ZAE Clevis eyes To be mounted on the rod or in the base.

ZAF Flange To be mounted on the machined ends of the body.

ZAP Plate To be mounted on the machined ends of the body as alternative to the flange.

ZAA Nut To block either flange or plate.

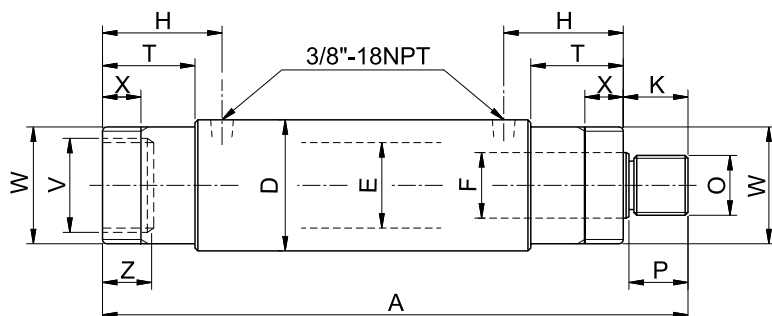


p. 83



Due to their unusual mounting, these cylinders are supplied without the female **K73F** half-couplers which can be ordered separately if required.

INDUSTRIAL CYLINDERS, DOUBLE ACTING



- Force 5 - 25 t
- Stroke 30 - 260 mm
- Max working pressure 700 bar

SELECTION CHART

Pushing force t* kN	Pulling force t* kN	Stroke mm	Pushing oil volume cm ³	Pulling oil volume cm ³	MODEL	Closed height	External Dia.	Piston Dia.	Rod Dia.	Couplers height	Rod prjection	Rod thread	Rod thread length	Collar length	Internal base thread	Internal base thread depth	Collar thread	Collar thread length	Weight
						A	D	E	F	H	K	O	P	T	V	Z	W	X	kg
5 49,5	3 27,5	30	21	12	COD5N30	185													2,1
		80	57	31	COD5N80	235	50	30	20	45	22	M18x1,5	19	26	M35x1,5	13	M42x1,5	9	2,8
		160	113	63	COD5N160	315													3,8
10 97	6 62	30	42	27	COD10N30	204													3,6
		80	111	72	COD10N80	254	63	42	25	54	23	M22x1,5	20	35	M42x1,5	15	M56x2	15	4,5
		160	222	143	COD10N160	334													5,8
		260	360	233	COD10N260	434													7,3
15 137	8 81	160	314	185	COD15N160	376	80	50	32	71	31	M30x2	28	52	M56x2	27	M70x2	16	10,8
		260	511	301	COD15N260	476													13,9
25 232	12 121	160	531	276	COD25N160	412	92	65	45	84	41	M42x1,5	38	65	M70x2	30	M85x2	20	15,5
		260	863	449	COD25N260	512													19,4

* Nominal value, see kN for the exact force

ACCESSORIES FOR COD CYLINDERS: ZAE - ZAF - ZAP - ZAA

MODEL	a	b	c	d	e	f	h	m	q	kg
ZAE5	62	46	16	16	-	-	-	M18x1,5	M35x1,5	0,3
ZAE10	77	58	20	25	-	-	-	M22x1,5	M42x1,5	0,6
ZAE15	98	73	25	32	-	-	-	M30x2	M56x2	1,2
ZAE25	112	80	32	38	-	-	-	M42x1,5	M70x2	2,0
ZAF5	42	98	78,6	11	17	-	-	-	-	0,8
ZAF10	56	118	99	11	23	-	-	-	-	1,5
ZAF15	70	145	116	17	35	-	-	-	-	3,4
ZAF25	85	168	136	17	45	-	-	-	-	6,0
ZAP5	42	80	58	10,5	17	60	32	-	-	0,4
ZAP10	56	110	82,6	13	23	82	45	-	-	1,1
ZAP15	70	135	100	21	35	100	52	-	-	2,6
ZAP25	85	160	118	26	45	125	63,5	-	-	5,1
ZAA5	58	9	-	-	-	-	-	-	M42x1,5	0,1
ZAA10	78	12	-	-	-	-	-	-	M56x2	0,3
ZAA15	95	16	-	-	-	-	-	-	M70x2	0,6
ZAA25	108	20	-	-	-	-	-	-	M85x2	0,8